

Shelf Electronic Ticketing

Today **90 %**

of the independent retailers selected SES as their supplier of Shelf Electronic Label System



Why ?

- Reliability of the technology
- + Simplest system to use
- + Fixing parts very efficient

- = **The lowest operating costs**
- + Interesting pricing

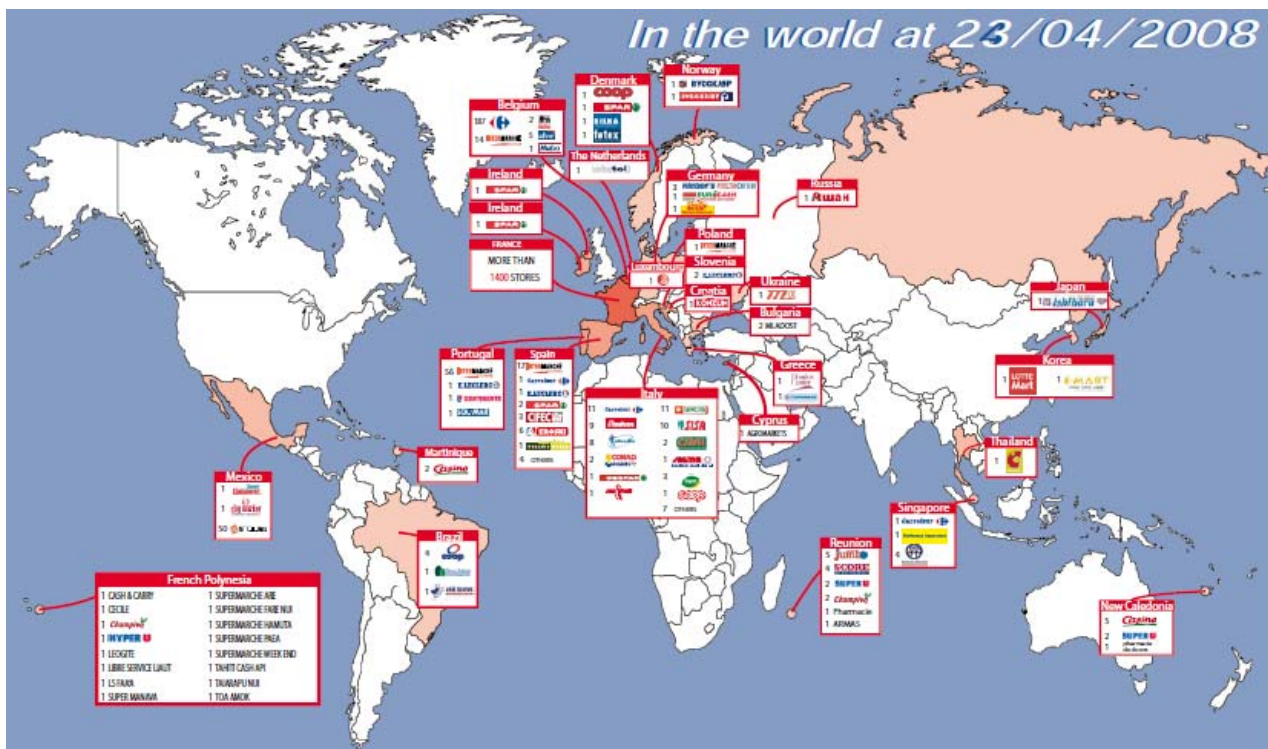
- = **The best return on investment**

"It's important, it's your money !"

Almost 2000 stores equipped with the SES System



Shelf Electronic Ticketing



WHY SUCH A SUCCESS?

Our customers compared several Electronic ticketing solutions and concluded that selecting SES system means:

- Choosing the **best transmission reliability** (the radio low frequency is the only technology that goes through all obstacles)
- Choosing the **simplest use in everyday life**
- Adopting aesthetical labels with large digits and superior capacities (calculation capacities, 13 memories, **3 different price zones, yellow back-ground to highlight the main price, grey background for the 2 secondary prices**)
- Offering **unrivalled** fixing solutions that **match** store needs (tamper proof solutions thanks to the patented "easy-lock" unlocking tool)
- Obtaining the **lowest operating costs** (no need to switch on the lights in the store at night) on the market and the best Return on Investment



It is the only radio transmission system that goes through all the physical obstacles and that covers the entire sales area.

Store Electronic Systems Electronic Shelf Labelling is distributed in Australia and New Zealand by **Pacific Business Consultants** Tel: +61 -2 8197 2846 Fax: +61 -2 9475 0664 msquire@pacificbusinessconsultants.com

| | | | |
|----------------|-------|-----------------------|----------|
| Store | _____ | Phone | _____ |
| Name | _____ | Position | _____ |
| Address | _____ | Postcode | _____ |
| Town | _____ | No of Products | _____ |
| Email | _____ | Store Area | _____ m2 |